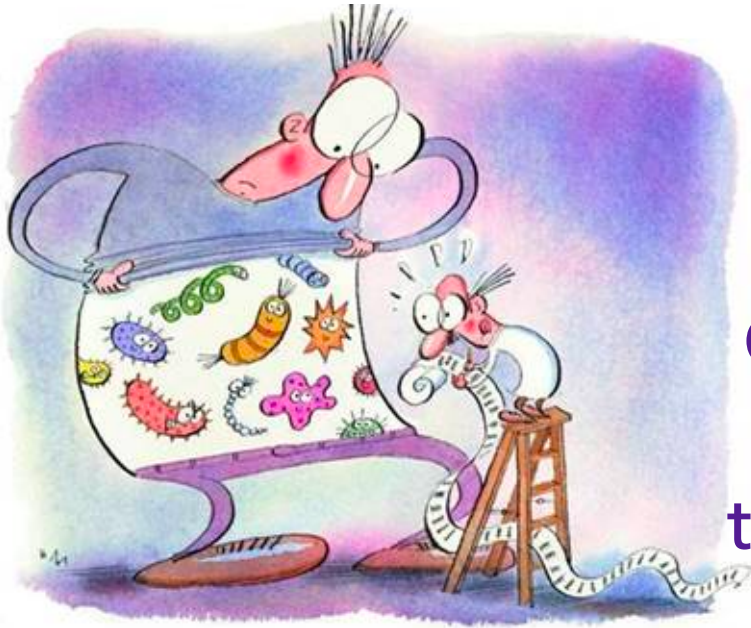


Does your gut function have an impact on your metabolic health?



PARTICIPANTS NEEDED!

We are looking for
OVERWEIGHT MEN
and **WOMEN** to
take part in our study

Study Description

You will be invited to complete a 1-hour screening visit and two main study visits of 3 and 5 hours (after a 12-hours overnight fast).

The study will involve the collection of blood, urine and stool samples.

Inclusion criteria:

- ▶ A non-smoking woman or man
- ▶ Between 18 and 70 years old
- ▶ Overweight or obese with a BMI between 25 and 50 kg/m²

Where: Clyde Williams building,
Loughborough University
LE11 3TU

If you want to be part of our study, or if you have questions, please contact Malvina Begalli (PhD researcher)

@ m.begalli@lboro.ac.uk

☎ 01509226445

The study has been given a favourable opinion for conduct by the University Ethics Approvals (Human Participants) sub-Committee (Ref. R18-P206)